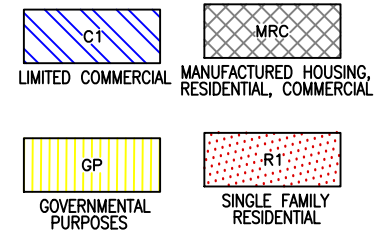


01-10 ZONING MAP

R 44 E

NOTE:
THIS PLAT IS FOR ASSESSMENT USE ONLY,
AND DOES NOT REPRESENT A SURVEY. NO
LIABILITY IS ASSUMED AS TO THE
ACCURACY OF THE DATA DELINEATED
HEREON. USE OF THIS PLAT FOR OTHER
THAN ASSESSMENT PURPOSES IS FORBIDDEN
UNLESS APPROVED BY THE DEPT. OF
TAXATION, DIVISION OF ASSESSMENT
STANDARDS.

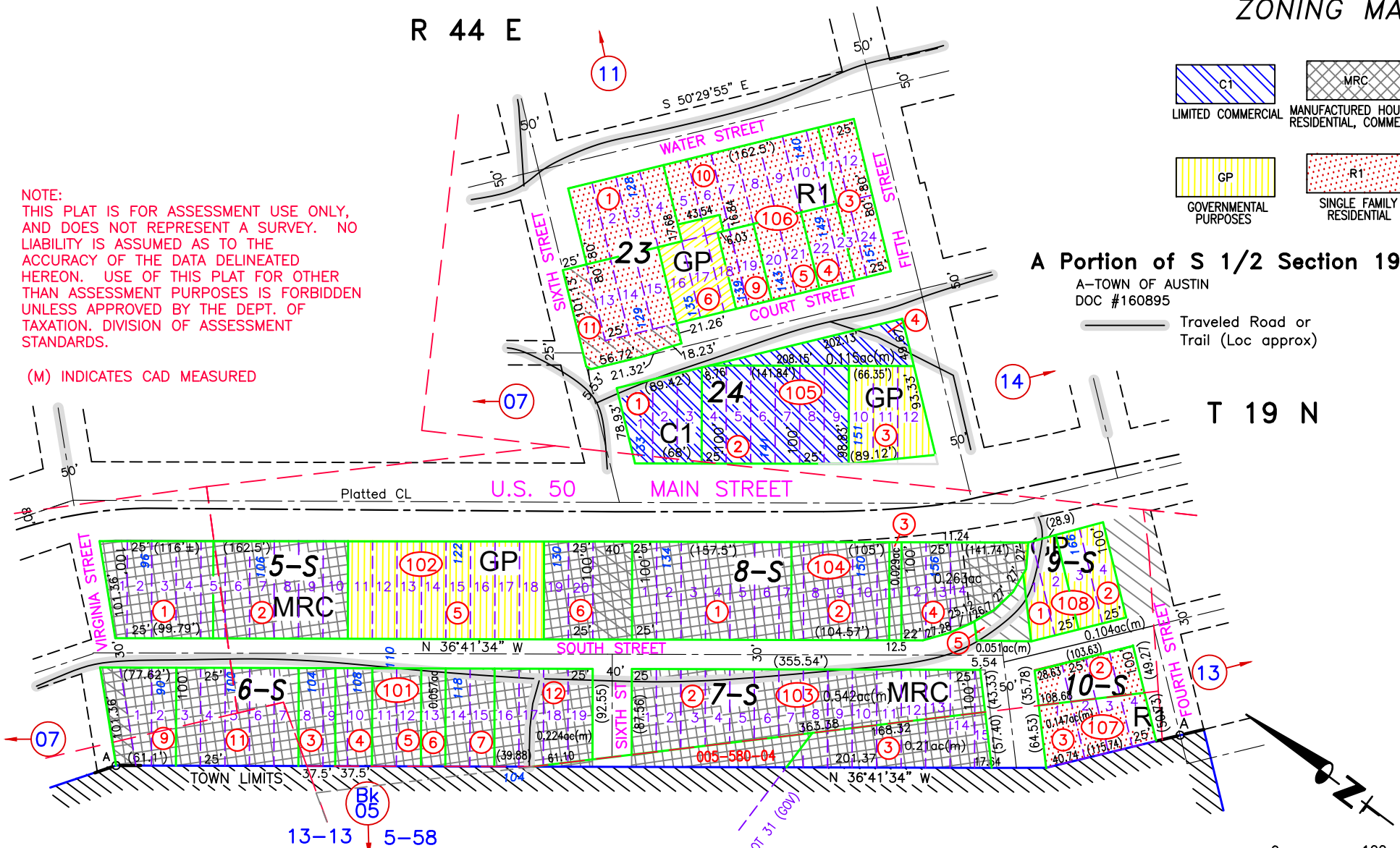
(M) INDICATES CAD MEASURED



A Portion of S 1/2 Section 19
A-TOWN OF AUSTIN
DOC #160895

Traveled Road or Trail (Loc approx)

T 19 N



001-101-13, 001-103-04 COMBINED INTO 005-580-04,
DOC #305917, 11/30/22, NJW
REVIEWED AND REVISED MINING CLAIM LOCATIONS,
PARCELS SPLIT ALONG CLAIM BOUNDARIES, SPLIT
001-101-08 TO 001-101-12, 13;
001-103-01 TO 001-103-02, 03, 04;
001-107-01 TO 001-107-02, 03; 06/13/22 NJW



M.D.B. & M.

Austin
LANDER COUNTY