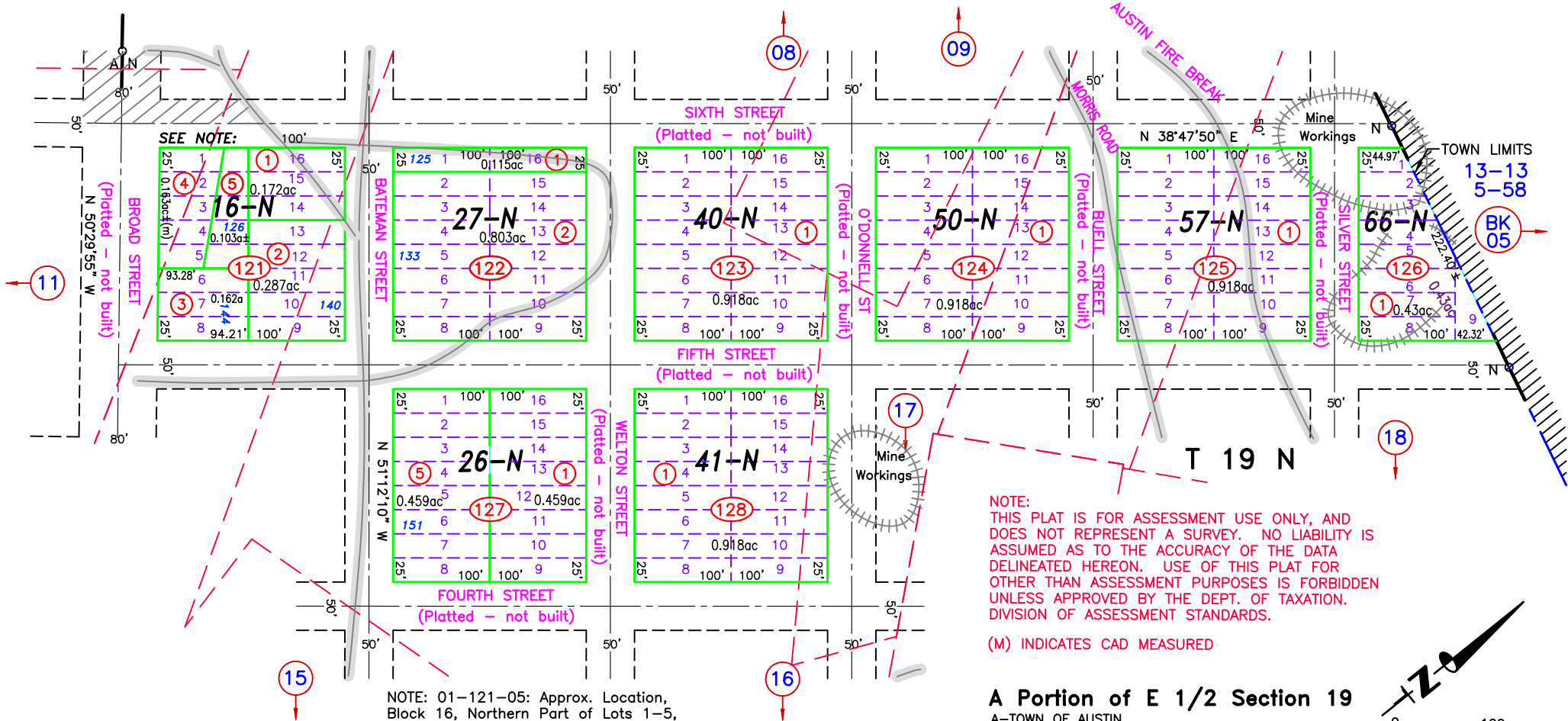


R 44 E



SEE NOTE:

NOTE: 01-121-05: Approx. Location, Block 16, Northern Part of Lots 1-5, Doc #224315

NOTE: THIS PLAT IS FOR ASSESSMENT USE ONLY, AND DOES NOT REPRESENT A SURVEY. NO LIABILITY IS ASSUMED AS TO THE ACCURACY OF THE DATA DELINEATED HEREON. USE OF THIS PLAT FOR OTHER THAN ASSESSMENT PURPOSES IS FORBIDDEN UNLESS APPROVED BY THE DEPT. OF TAXATION, DIVISION OF ASSESSMENT STANDARDS.

(M) INDICATES CAD MEASURED

A Portion of E 1/2 Section 19
A-TOWN OF AUSTIN
N-NORTHERN ADDITION
DOC #160895

