


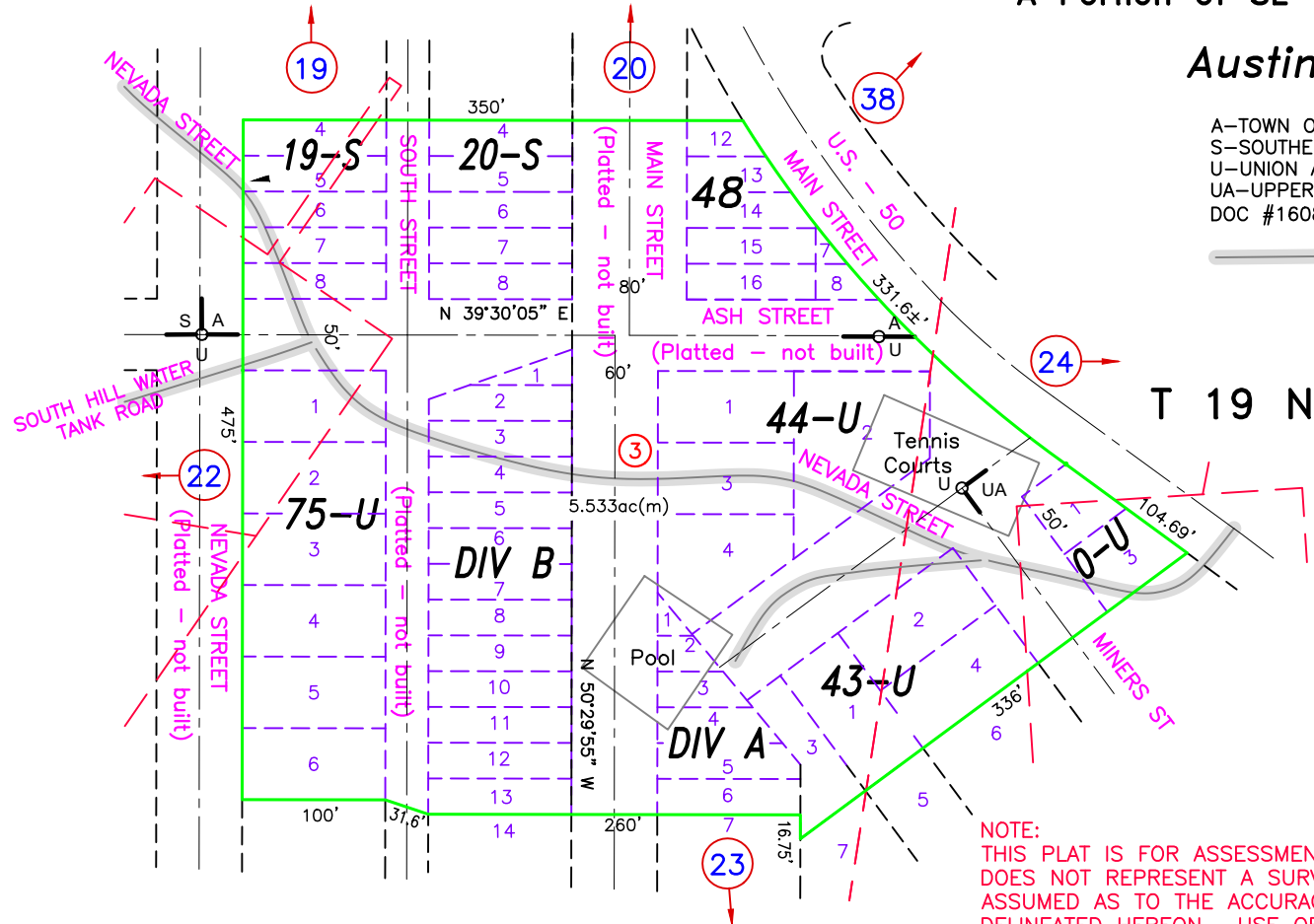
R 44 E

A Portion of SE 1/4 Section 19

Austin Park

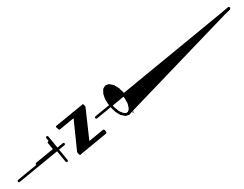
A-TOWN OF AUSTIN
 S-SOUTHERN ADDITION
 U-UNION ADDITION
 UA-UPPER AUSTIN
 DOC #160895

 Traveled Road or Trail (Loc approx)



NOTE:
 THIS PLAT IS FOR ASSESSMENT USE ONLY, AND DOES NOT REPRESENT A SURVEY. NO LIABILITY IS ASSUMED AS TO THE ACCURACY OF THE DATA DELINEATED HEREON. USE OF THIS PLAT FOR OTHER THAN ASSESSMENT PURPOSES IS FORBIDDEN UNLESS APPROVED BY THE DEPARTMENT OF TAXATION, DIVISION OF ASSESSMENT STANDARDS.

(M) INDICATES CAD MEASURED



REVIEWED AND REVISED MINING CLAIM LOCATIONS, ADJUSTED EAST BOUNDARY IN BLOCK 43 OF 001-370-03, DOC #086211; 07/13/22 NJW

Austin
LANDER COUNTY