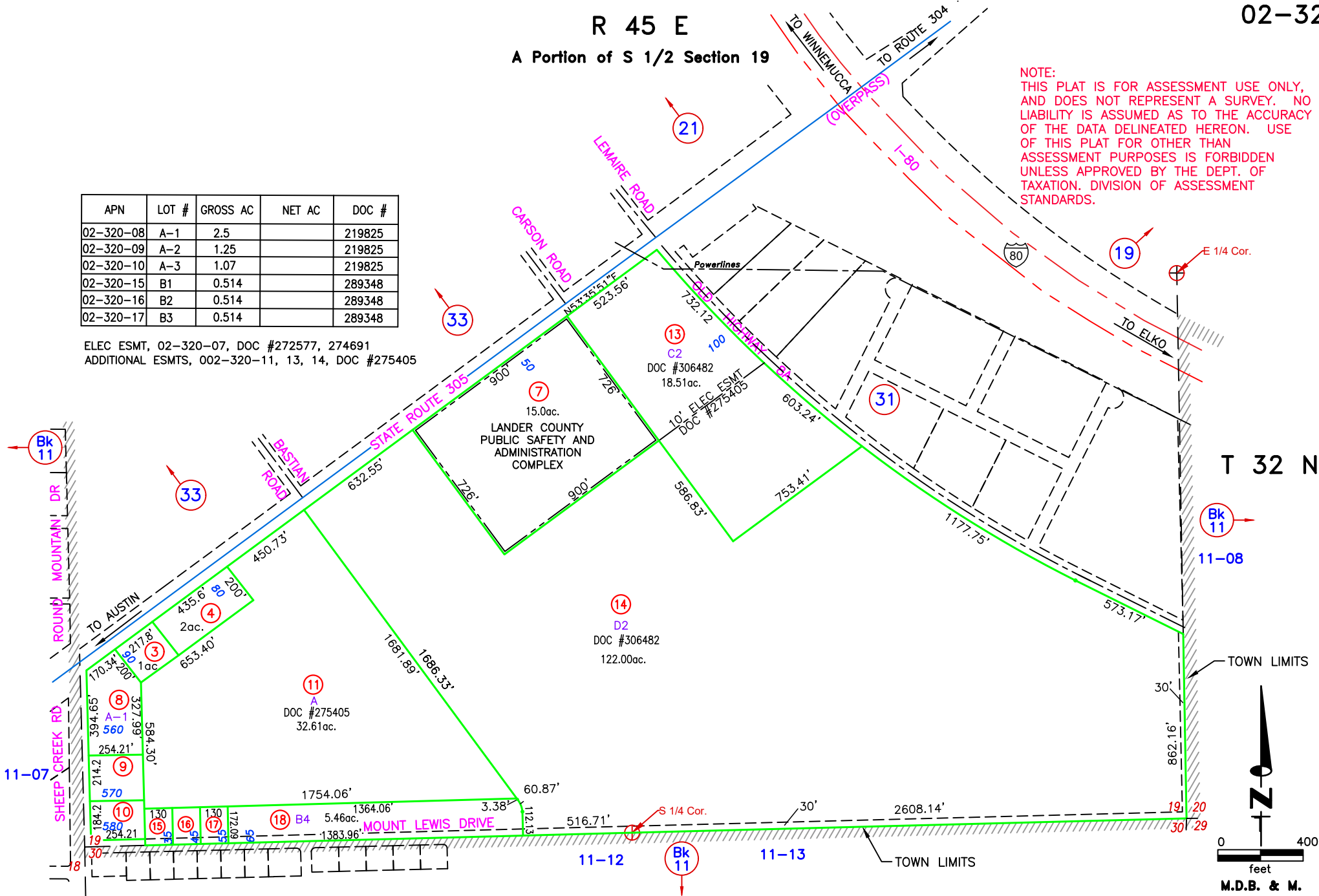


R 45 E
A Portion of S 1/2 Section 19

NOTE:
THIS PLAT IS FOR ASSESSMENT USE ONLY,
AND DOES NOT REPRESENT A SURVEY. NO
LIABILITY IS ASSUMED AS TO THE ACCURACY
OF THE DATA DELINEATED HEREON. USE
OF THIS PLAT FOR OTHER THAN
ASSESSMENT PURPOSES IS FORBIDDEN
UNLESS APPROVED BY THE DEPT. OF
TAXATION. DIVISION OF ASSESSMENT
STANDARDS.

| APN | LOT # | GROSS AC | NET AC | DOC # |
|-----------|-------|----------|--------|--------|
| 02-320-08 | A-1 | 2.5 | | 219825 |
| 02-320-09 | A-2 | 1.25 | | 219825 |
| 02-320-10 | A-3 | 1.07 | | 219825 |
| 02-320-15 | B1 | 0.514 | | 289348 |
| 02-320-16 | B2 | 0.514 | | 289348 |
| 02-320-17 | B3 | 0.514 | | 289348 |

ELEC ESMT, 02-320-07, DOC #272577, 274691
ADDITIONAL ESMTS, 002-320-11, 13, 14, DOC #275405



REVIEWED 03/27/23 NJW
BOUNDARY LINE ADJUSTMENT, 002-320-13, 14, DOC #306482, 11/21/22 NJW
02-232-12 SPLIT TO 02-320-15, 16, 17, 18, DOC #289348, 07/15/19 NJW