


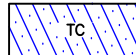
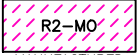
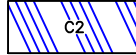



02-32 ZONING MAP

R 45 E A Portion of S 1/2 Section 19

 R3 SINGLE FAMILY RESIDENTIAL	 R4 MULTIPLE FAMILY RESIDENTIAL	 C1 LIMITED COMMERCIAL	 TC TOURIST COMMERCIAL
 R2-MO MANUFACTURED HOUSING, RESIDENTIAL OVERLAY	 C2 GENERAL COMMERCIAL	 GP GOVERNMENTAL PURPOSES	

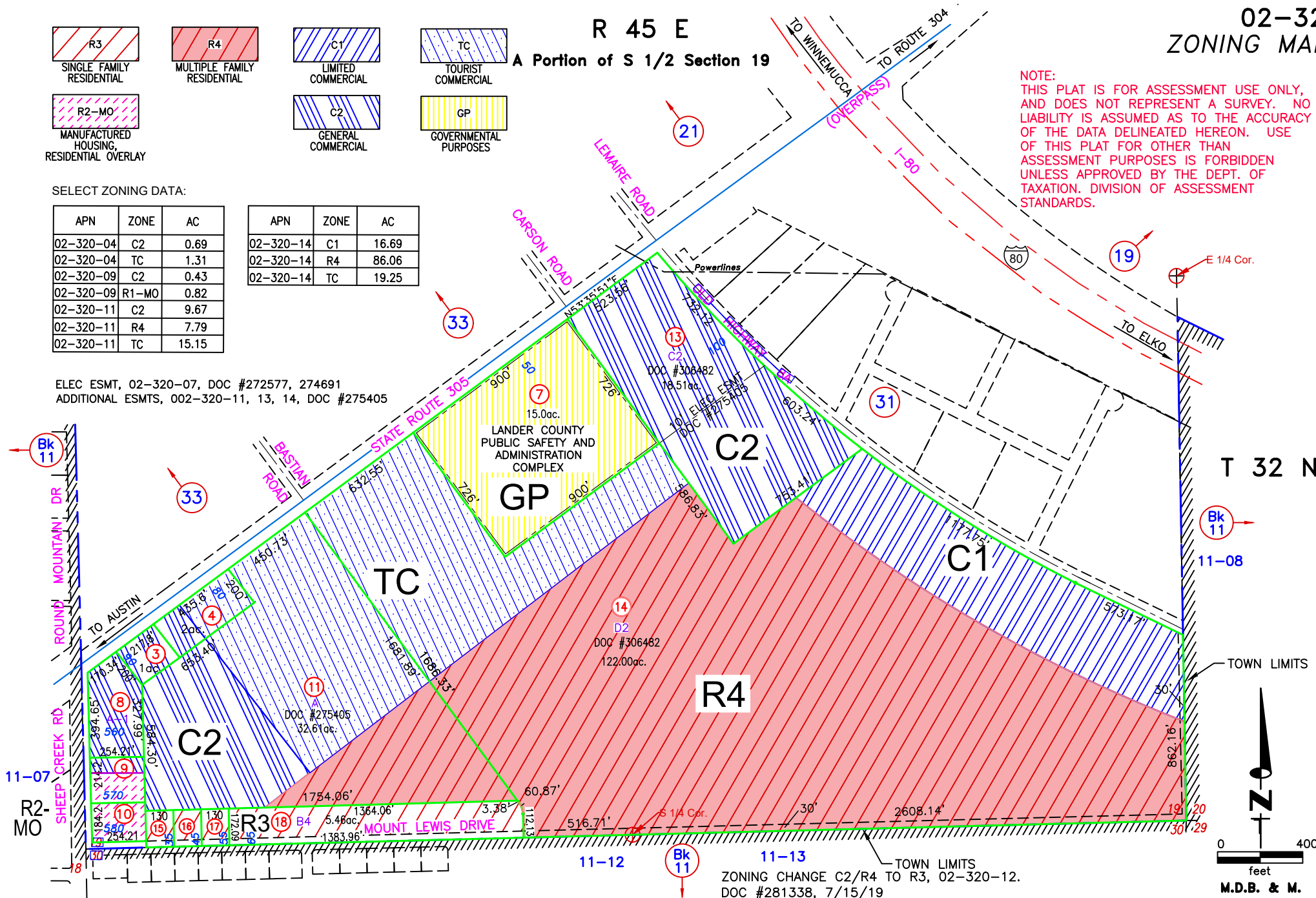
NOTE: THIS PLAT IS FOR ASSESSMENT USE ONLY, AND DOES NOT REPRESENT A SURVEY. NO LIABILITY IS ASSUMED AS TO THE ACCURACY OF THE DATA DELINEATED HEREON. USE OF THIS PLAT FOR OTHER THAN ASSESSMENT PURPOSES IS FORBIDDEN UNLESS APPROVED BY THE DEPT. OF TAXATION. DIVISION OF ASSESSMENT STANDARDS.

SELECT ZONING DATA:

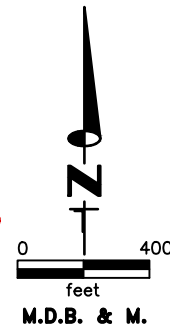
APN	ZONE	AC
02-320-04	C2	0.69
02-320-04	TC	1.31
02-320-09	C2	0.43
02-320-09	R1-MO	0.82
02-320-11	C2	9.67
02-320-11	R4	7.79
02-320-11	TC	15.15

APN	ZONE	AC
02-320-14	C1	16.69
02-320-14	R4	86.06
02-320-14	TC	19.25

ELEC ESMT, 02-320-07, DOC #272577, 274691
ADDITIONAL ESMTS, 002-320-11, 13, 14, DOC #275405



TOWN LIMITS
ZONING CHANGE C2/R4 TO R3, 02-320-12.
DOC #281338, 7/15/19
ZONING CHANGE 02-320-13, C1, TC, R4 TO
C2, DOC #312156, 02/28/24



REVIEWED 05/09/23 NJW
BOUNDARY LINE ADJUSTMENT, 002-320-13, 14, DOC #306482, 11/21/22 NJW
02-232-12 SPLIT TO 02-320-15, 16, 17, 18, DOC #289348, 07/15/19 NJW

Battle Mountain
LANDER COUNTY