
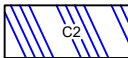
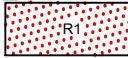

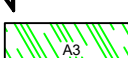
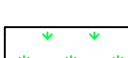
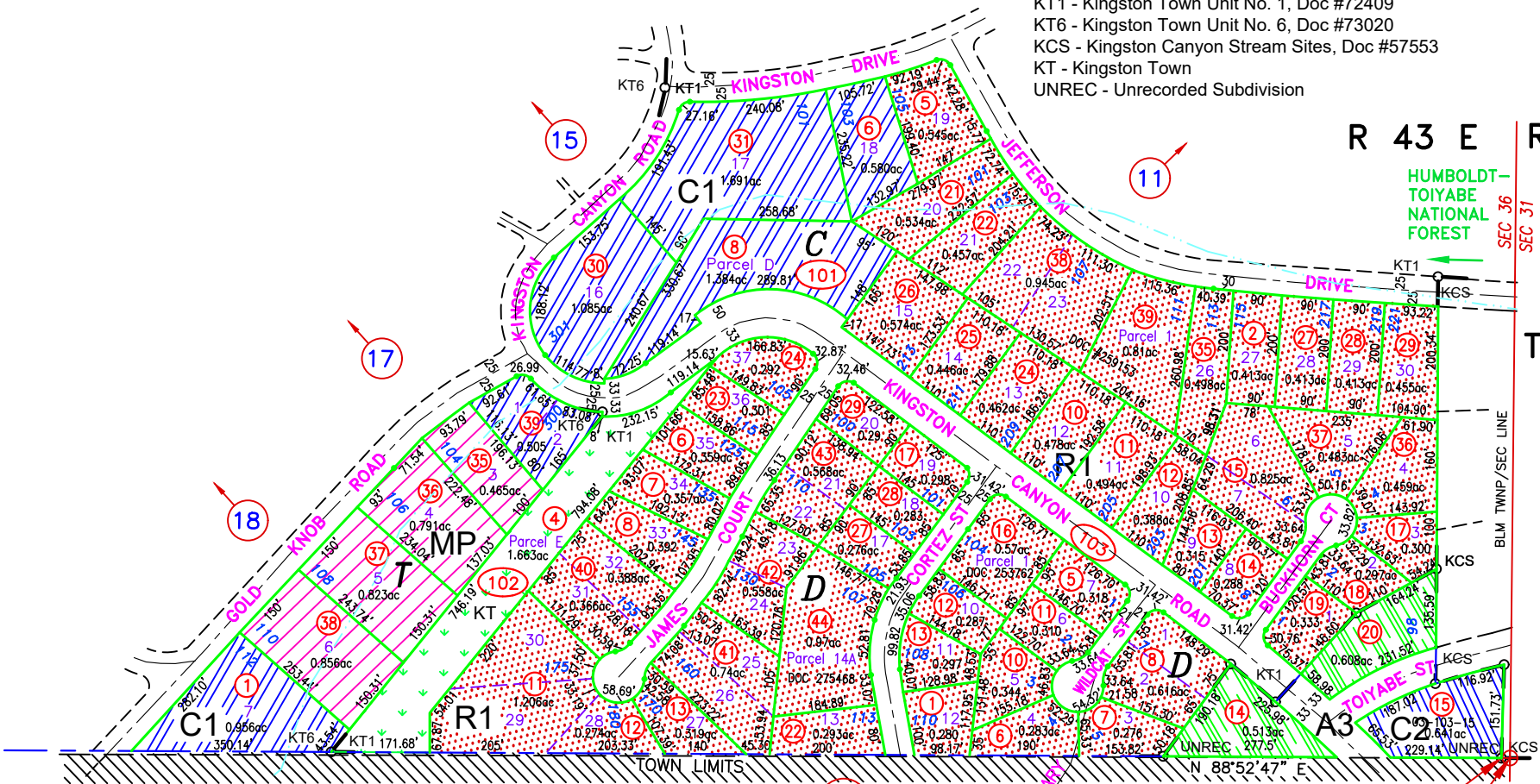


03-10 ZONING MAP

A Portion of SE 1/4 Section 36

KT1 - Kingston Town Unit No. 1, Doc #72409
 KT6 - Kingston Town Unit No. 6, Doc #73020
 KCS - Kingston Canyon Stream Sites, Doc #57553
 KT - Kingston Town
 UNREC - Unrecorded Subdivision

-  C1
LIMITED COMMERCIAL
-  C2
GENERAL COMMERCIAL
-  R1
SINGLE FAMILY RESIDENTIAL
-  MP
MANUFACTURED HOUSING PARK
-  A3
FARM, FORESTRY AND OPEN RESERVE
-  COMMON AREA



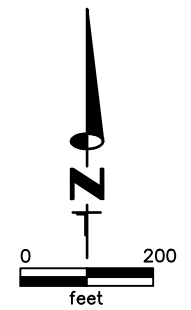
KINGSTON NOTE:
 THE SECTION CORNERS SHOWN ON THE VARIOUS TOWN PLAT MAPS DO NOT EXACTLY COINCIDE WITH THE BLM SECTION CORNERS. (PLAT) INDICATES A PLATTED CORNER AND (BLM) INDICATES A BLM CORNER AS OBTAINED FROM THE CURRENT PUBLIC LANDBASE

GROSS ACREAGE IS SHOWN. (N) INDICATES NET ACREAGE (M) INDICATES CAD MEASURED

NOTE:
 THIS PLAT IS FOR ASSESSMENT USE ONLY, AND DOES NOT REPRESENT A SURVEY. NO LIABILITY IS ASSUMED AS TO THE ACCURACY OF THE DATA DELINEATED HEREON. USE OF THIS PLAT FOR OTHER THAN ASSESSMENT PURPOSES IS FORBIDDEN UNLESS APPROVED BY THE DEPARTMENT OF TAXATION, DIVISION OF ASSESSMENT STANDARDS.

REVIEWED 08/28/23 NJW
 RELABELLED KMA TO KT, DOC #273324, 12/16/21, NJW
 BOUNDARY LINE ADJUSTMENT, 003-101-38, 39; DOC #259153, 11/09/20
 UPDATE LANDBASE 11/05/20 NJW

ZONING CA TO C1, 03-101-08 DOC #2289317, 3/21/19 NJW



M.D.B. & M.
Kingston
 LANDER COUNTY