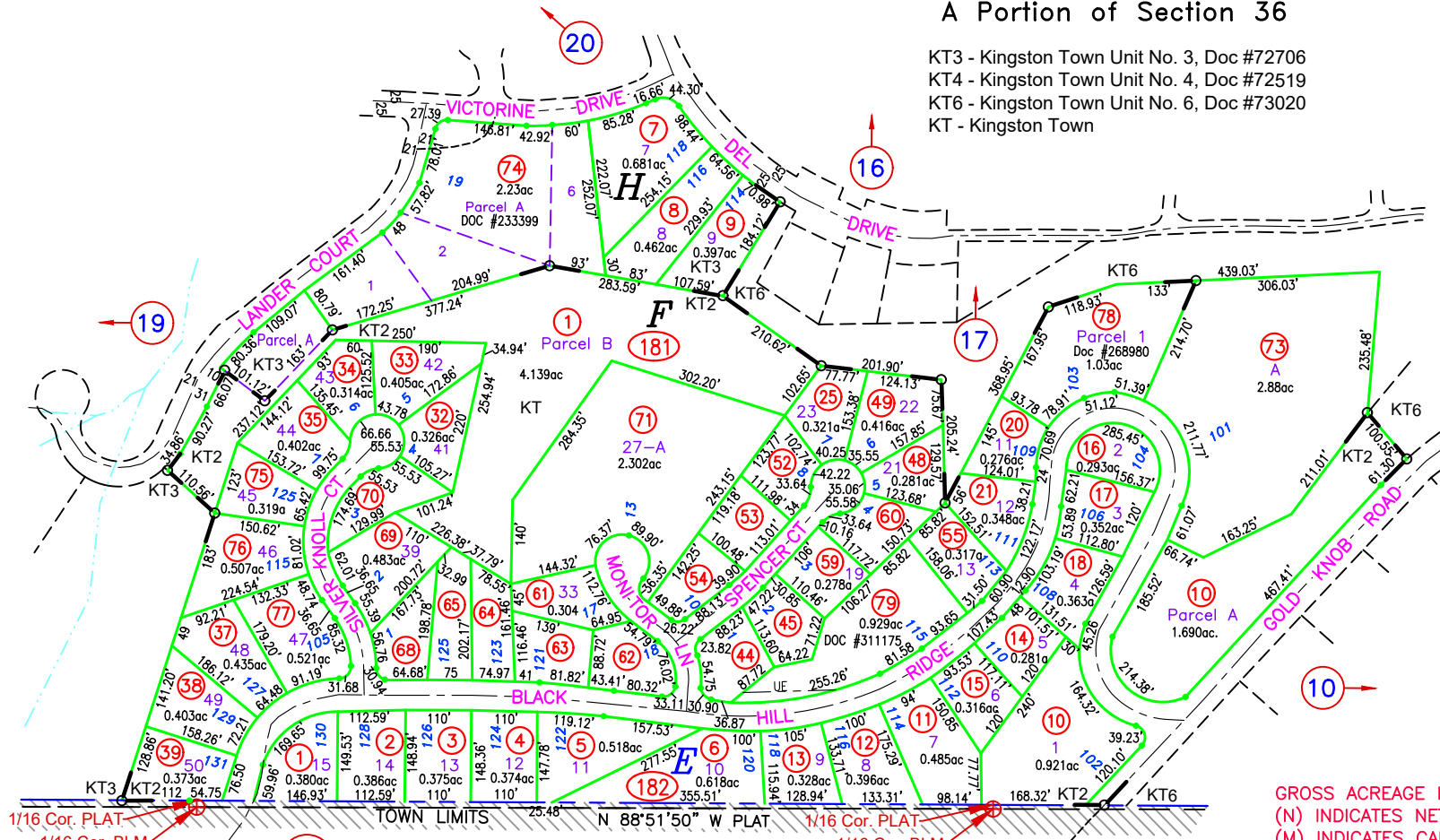


R 43 E

A Portion of Section 36

KT3 - Kingston Town Unit No. 3, Doc #72706
 KT4 - Kingston Town Unit No. 4, Doc #72519
 KT6 - Kingston Town Unit No. 6, Doc #73020
 KT - Kingston Town



T 16 N

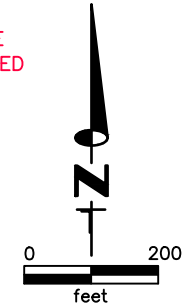
SELECT PARCEL DATA:

APN	LOT #	AREA
3-181-44	17	0.292ac
3-181-45	18	0.289ac
3-181-52	24	0.279ac
3-181-53	25	0.283ac
3-181-54	26	0.278ac
3-181-60	20	0.299ac
3-181-62	34	0.296ac
3-181-63	35	0.301ac
3-181-64	36	0.295ac
3-181-65	37	0.311ac
3-181-68	38	0.299ac
3-181-70	40	0.314ac

GROSS ACREAGE IS SHOWN.
 (N) INDICATES NET ACREAGE
 (M) INDICATES CAD MEASURED
 (UE) UTILITY EASEMENT

KINGSTON NOTE:
 THE SECTION CORNERS SHOWN ON THE VARIOUS TOWN PLAT MAPS DO NOT EXACTLY COINCIDE WITH THE BLM SECTION CORNERS. (PLAT) INDICATES A PLATTED CORNER AND (BLM) INDICATES A BLM CORNER AS OBTAINED FROM THE CURRENT PUBLIC LANDBASE

NOTE:
 THIS PLAT IS FOR ASSESSMENT USE ONLY, AND DOES NOT REPRESENT A SURVEY. NO LIABILITY IS ASSUMED AS TO THE ACCURACY OF THE DATA DELINEATED HEREON. USE OF THIS PLAT FOR OTHER THAN ASSESSMENT PURPOSES IS FORBIDDEN UNLESS APPROVED BY THE DEPARTMENT OF TAXATION, DIVISION OF ASSESSMENT STANDARDS.



M.D.B. & M.
Kingston
LANDER COUNTY

COMBINE 003-181-56, 57, 58 TO 003-181-79, DOC #311175, 01/14/24 NJW
 ADD ESMT, 11/18/22, NJW
 RELABELLED KMA TO KT, DOC #273324, 04/14/22, NJW

NV ENERGY 15' ESMT, 003-181-58, DOC #306735