

R 43 E

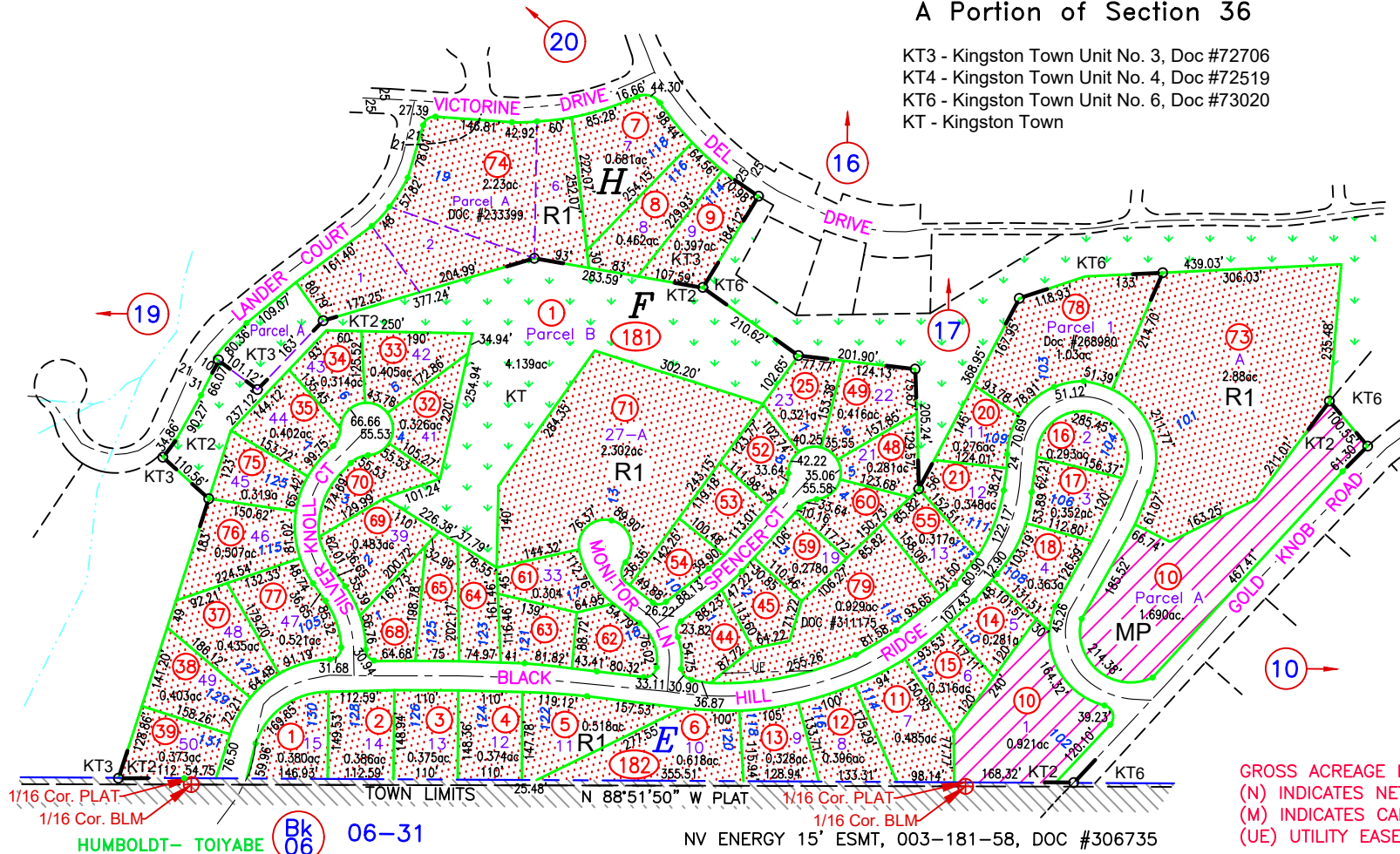
A Portion of Section 36

KT3 - Kingston Town Unit No. 3, Doc #72706  
KT4 - Kingston Town Unit No. 4, Doc #72519  
KT6 - Kingston Town Unit No. 6, Doc #73020  
KT - Kingston Town

**R1**  
SINGLE FAMILY RESIDENTIAL

**MP**  
MANUFACTURED HOUSING PARK

**COMMON AREA**



T 16 N

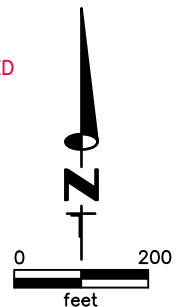
SELECT PARCEL DATA:

APN	LOT #	AREA
3-181-44	17	0.292ac
3-181-45	18	0.289ac
3-181-52	24	0.279ac
3-181-53	25	0.283ac
3-181-54	26	0.278ac
3-181-60	20	0.299ac
3-181-62	34	0.296ac
3-181-63	35	0.301ac
3-181-64	36	0.295ac
3-181-65	37	0.311ac
3-181-68	38	0.299ac
3-181-70	40	0.314ac

GROSS ACREAGE IS SHOWN.  
(N) INDICATES NET ACREAGE  
(M) INDICATES CAD MEASURED  
(UE) UTILITY EASEMENT

**KINGSTON NOTE:**  
THE SECTION CORNERS SHOWN ON THE VARIOUS TOWN PLAT MAPS DO NOT EXACTLY COINCIDE WITH THE BLM SECTION CORNERS. (PLAT) INDICATES A PLATTED CORNER AND (BLM) INDICATES A BLM CORNER AS OBTAINED FROM THE CURRENT PUBLIC LANDBASE

**NOTE:**  
THIS PLAT IS FOR ASSESSMENT USE ONLY, AND DOES NOT REPRESENT A SURVEY. NO LIABILITY IS ASSUMED AS TO THE ACCURACY OF THE DATA DELINEATED HEREON. USE OF THIS PLAT FOR OTHER THAN ASSESSMENT PURPOSES IS FORBIDDEN UNLESS APPROVED BY THE DEPARTMENT OF TAXATION, DIVISION OF ASSESSMENT STANDARDS.



COMBINE 003-181-56, 57, 58 TO 003-181-79, DOC #311175, 01/14/24 NJW  
ADD ESMT, 11/18/22, NJW  
RELABELED KMA TO KT, DOC #273324, 04/14/22, NJW