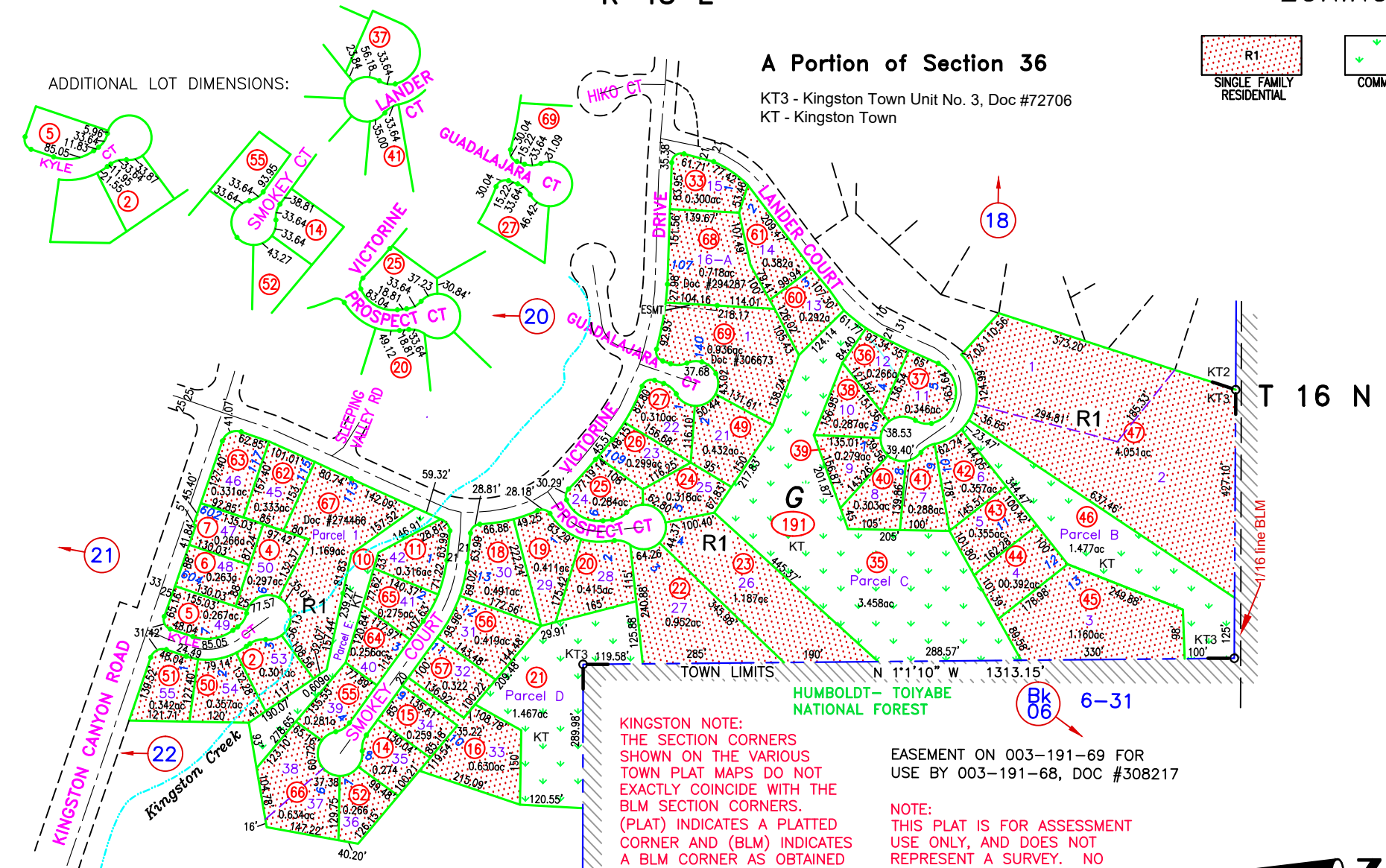
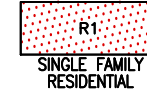


A Portion of Section 36

KT3 - Kingston Town Unit No. 3, Doc #72706  
KT - Kingston Town



ADDITIONAL LOT DIMENSIONS:

T 16 N

**KINGSTON NOTE:**  
THE SECTION CORNERS SHOWN ON THE VARIOUS TOWN PLAT MAPS DO NOT EXACTLY COINCIDE WITH THE BLM SECTION CORNERS. (PLAT) INDICATES A PLATTED CORNER AND (BLM) INDICATES A BLM CORNER AS OBTAINED FROM THE CURRENT PUBLIC LANDBASE

EASEMENT ON 003-191-69 FOR USE BY 003-191-68, DOC #308217

**NOTE:**  
THIS PLAT IS FOR ASSESSMENT USE ONLY, AND DOES NOT REPRESENT A SURVEY. NO LIABILITY IS ASSUMED AS TO THE ACCURACY OF THE DATA DELINEATED HEREON. USE OF THIS PLAT FOR OTHER THAN ASSESSMENT PURPOSES IS FORBIDDEN UNLESS APPROVED BY THE DEPARTMENT OF TAXATION, DIVISION OF ASSESSMENT STANDARDS.

GROSS ACREAGE IS SHOWN.  
(N) INDICATES NET ACREAGE  
(M) INDICATES CAD MEASURED

ZONING CHANGE CA TO R1, 03-191-16, DOC #289317, 03/21/19 NJW

REVIEWED 09/15/23 NJW  
RECORD OF SURVEY, 003-190-68, DOC #308313, 07/20/23 NJW  
ADD EASEMENT, 003-190-69, DOC #308217, 03/01/23 NJW  
COMBINE 03-191-29, 30, 48 TO 03-191-69,  
DOC #306673, 12/01/22 NJW

