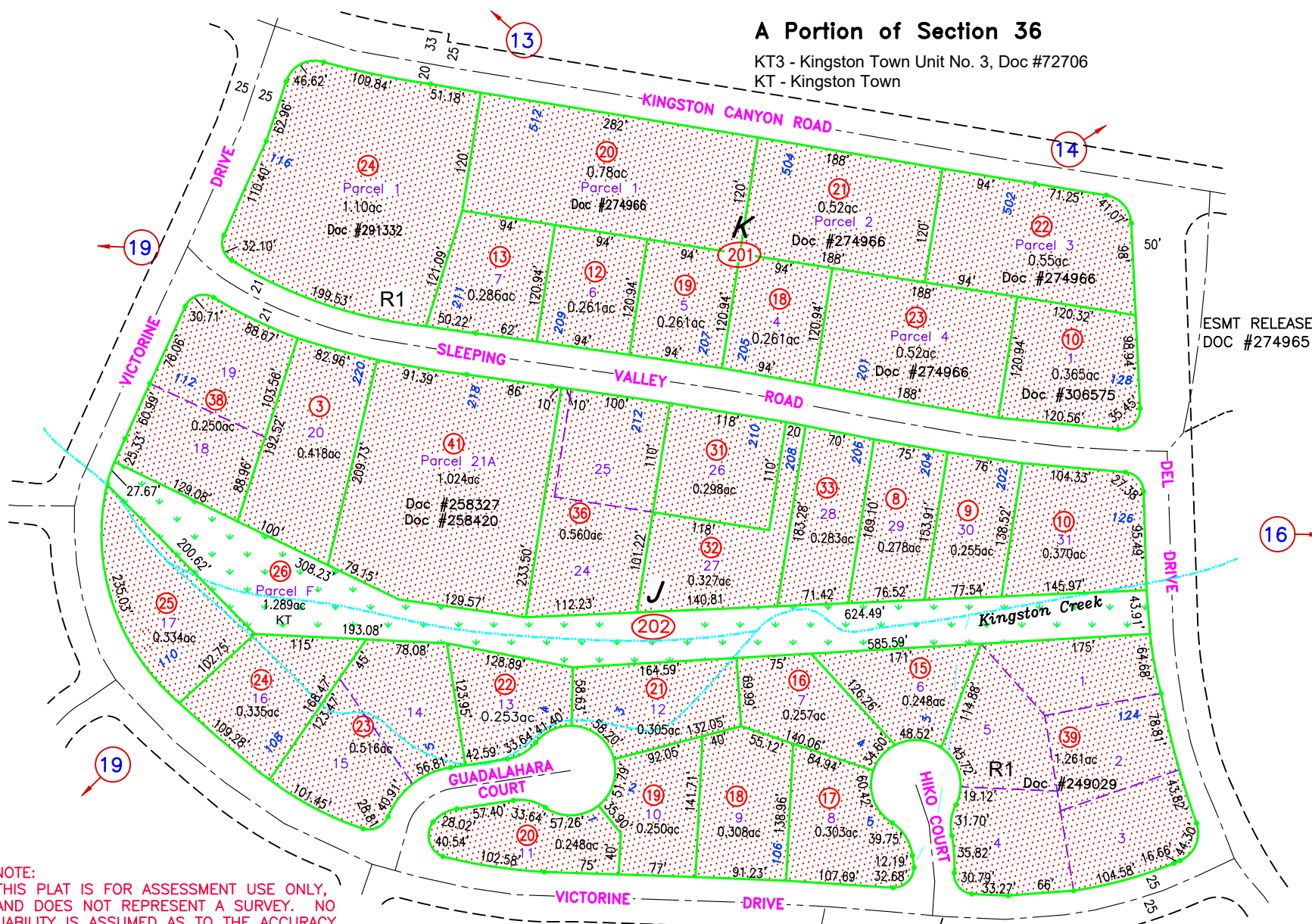
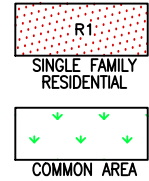


R 43 E

A Portion of Section 36

KT3 - Kingston Town Unit No. 3, Doc #27206
KT - Kingston Town



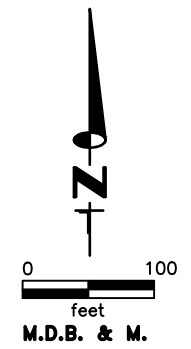
ESMT RELEASE
DOC #274965

T 16 N

NOTE:
THIS PLAT IS FOR ASSESSMENT USE ONLY,
AND DOES NOT REPRESENT A SURVEY. NO
LIABILITY IS ASSUMED AS TO THE ACCURACY
OF THE DATA DELINEATED HEREON. USE OF
THIS PLAT FOR OTHER THAN ASSESSMENT
PURPOSES IS FORBIDDEN UNLESS APPROVED
BY THE DEPARTMENT OF TAXATION, DIVISION
OF ASSESSMENT STANDARDS.

KINGSTON NOTE:
THE SECTION CORNERS SHOWN ON THE VARIOUS TOWN
PLAT MAPS DO NOT EXACTLY COINCIDE WITH THE BLM
SECTION CORNERS. (PLAT) INDICATES A PLATTED CORNER
AND (BLM) INDICATES A BLM CORNER AS OBTAINED
FROM THE CURRENT PUBLIC LANDBASE

GROSS ACREAGE IS SHOWN.
(N) INDICATES NET ACREAGE
(M) INDICATES CAD MEASURED



REVIEWED 08/28/23 NJW
RECORD OF SURVEY, 003-201-10, DOC #306575, 12/1/22 NJW
RELABELED KMA TO KT, DOC #273324, 04/14/22, NJW