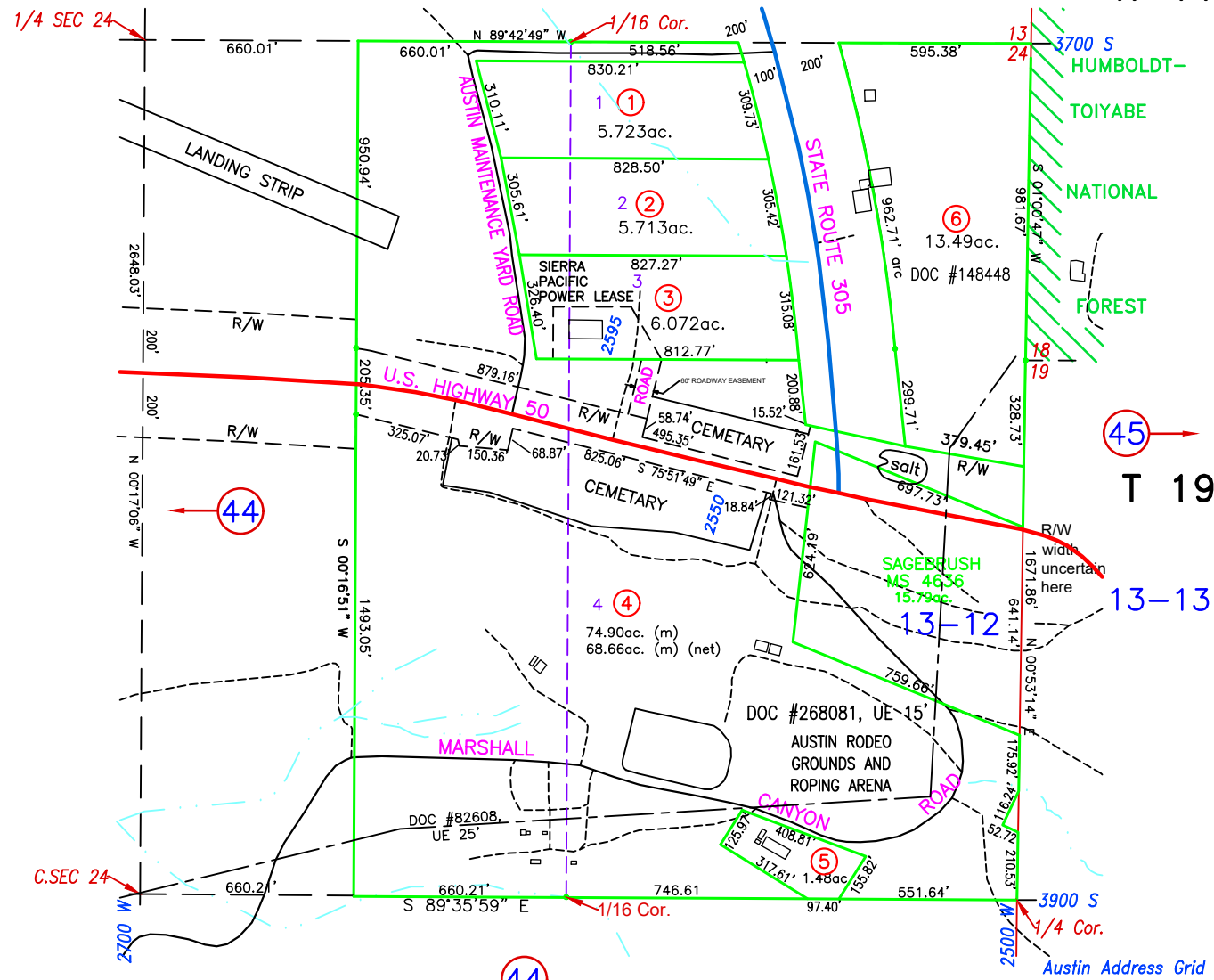


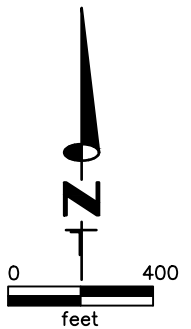
44 R 43 E NE 1/4, Section 24 R 44 E



SEE BOOK 13 FOR PATENTED MINING CLAIMS

NOTE:
 THIS PLAT IS FOR ASSESSMENT USE ONLY,
 AND DOES NOT REPRESENT A SURVEY. NO
 LIABILITY IS ASSUMED AS TO THE ACCURACY
 OF THE DATA DELINEATED HEREON. USE OF
 THIS PLAT FOR OTHER THAN ASSESSMENT
 PURPOSES IS FORBIDDEN UNLESS APPROVED
 BY THE DEPARTMENT OF TAXATION, DIVISION
 OF ASSESSMENT STANDARDS.

GROSS ACREAGE IS SHOWN.
 NET ACREAGE LABELED (NET) OR (M)
 (M) INDICATES CAD MEASURED
 (UE) UTILITY EASEMENT
 ELEC ESMT 05-500-04, DOC #268081. #82608



M.D.B. & M.

LANDER COUNTY

UPDATE ROADS, 05/26/20 NJW
 NEW PARCEL 05-500-06, DOC #148448, 07/07/19 NJW
 REVISE ACREAGE FOR 05-500-04, REMOVE PARCEL 6 AND HIGHWAY 50, 305 RIGHT-OF-WAY