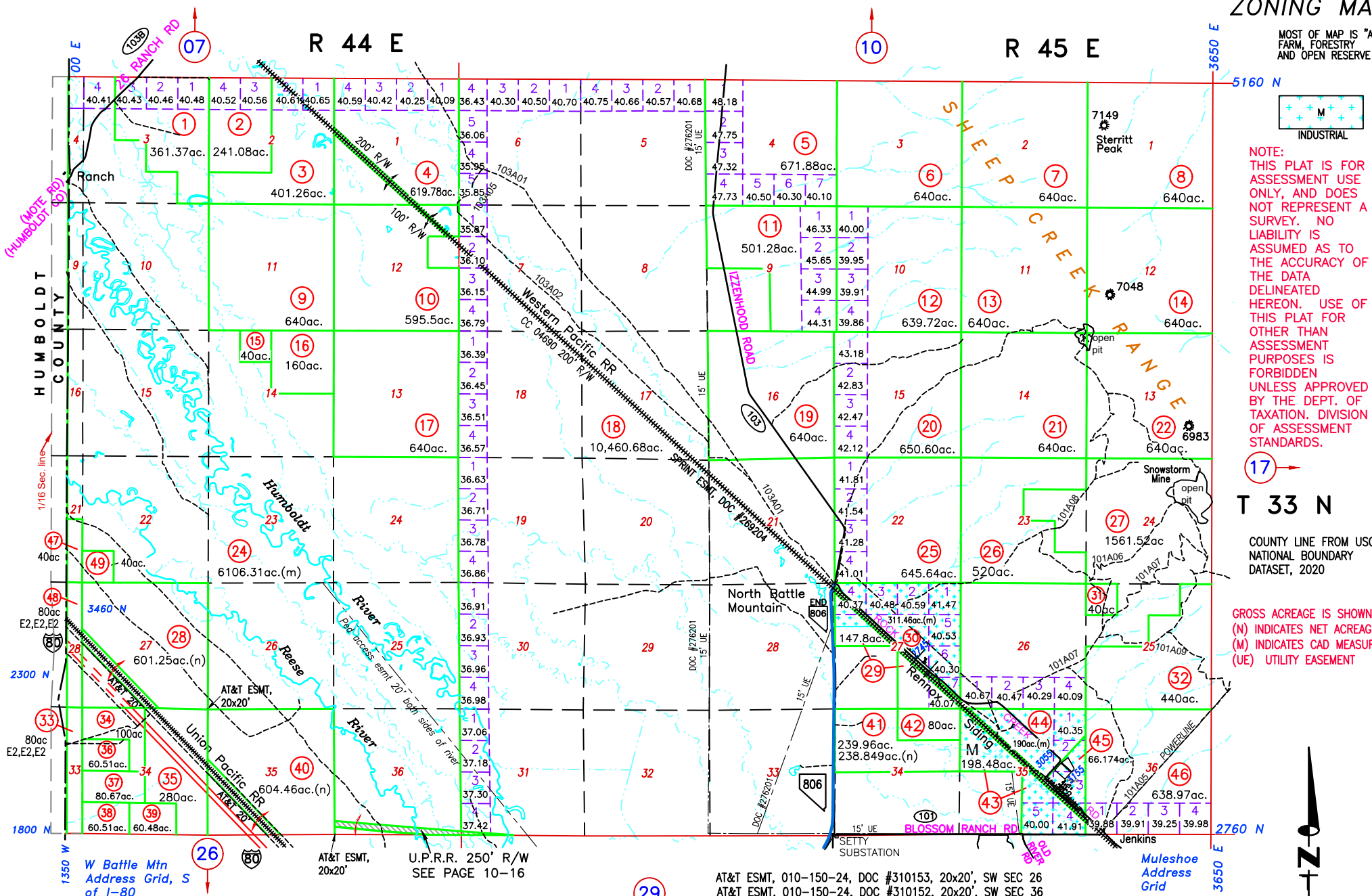


10-15 ZONING MAP

MOST OF MAP IS "A3" FARM, FORESTRY AND OPEN RESERVE



NOTE: THIS PLAT IS FOR ASSESSMENT USE ONLY, AND DOES NOT REPRESENT A SURVEY. NO LIABILITY IS ASSUMED AS TO THE ACCURACY OF THE DATA DELINEATED HEREON. USE OF THIS PLAT FOR OTHER THAN ASSESSMENT PURPOSES IS FORBIDDEN UNLESS APPROVED BY THE DEPT. OF TAXATION. DIVISION OF ASSESSMENT STANDARDS.

T 33 N
 COUNTY LINE FROM USGS NATIONAL BOUNDARY DATASET, 2020

GROSS ACREAGE IS SHOWN.
 (N) INDICATES NET ACREAGE
 (M) INDICATES CAD MEASURED
 (UE) UTILITY EASEMENT

REVIEWED 11/29/23 NJW
 UPDATE ACREAGE 010-150-05, 07/12/23 NJW
 CHANGE PARCEL NUMBER 010-150-23 TO 010-150-49, 02/23/23 NJW
 UPDATE ACREAGE, 010-150-41, DOC #293018, 01/11/22 NJW
 NEW PARCELS, 010-150-47 AND 48, FOUND DURING COUNTY LINE REVIEW, 05/28/21 NJW

AT&T ESMT, 010-150-24, DOC #310153, 20x20', SW SEC 26
 AT&T ESMT, 010-150-24, DOC #310152, 20x20', SW SEC 36
 AT&T ESMT, 010-150-40, DOC #306247, 20', SW OF RR
 NV ENERGY ESMT, 010-150-27, DOC #306087, Lot 1, Sec 26, 25'
 NV ENERGY ESMT, 010-150-18, DOC #276201
 SPRINT, ET AL, ESMT, ALONG RR, LARGE AREA, 010-150-03, 04, 10, 29, 30, 32, 44, 45, DOC #269204
 PEDESTRIAN ACCESS ESMT 20' BOTH SIDES OF RIVER, DOC #285167

0 1/2 1
 miles
M.D.B. & M.
LANDER COUNTY