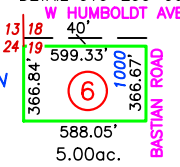
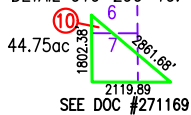


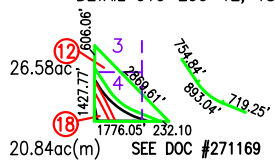
DETAIL 010-290-06:



DETAIL 010-290-10:



DETAIL 010-290-12, 18:



SELECT PARCEL DATA:

APN	PARCEL #	GROSS AC	NET AC	DOC #
10-290-10	3	44.75	-	271160
10-290-11	4	304.35	-	271160
10-290-12	5	26.58	-	271160
10-290-13	6	1.16	-	271160
10-290-14	7	30.00	-	271160

**NOTE:**  
THIS PLAT IS FOR ASSESSMENT USE ONLY, AND DOES NOT REPRESENT A SURVEY. NO LIABILITY IS ASSUMED AS TO THE ACCURACY OF THE DATA DELINEATED HEREON. USE OF THIS PLAT FOR OTHER THAN ASSESSMENT PURPOSES IS FORBIDDEN UNLESS APPROVED BY THE DEPARTMENT OF TAXATION, DIVISION OF ASSESSMENT STANDARDS.

GROSS ACREAGE IS SHOWN.  
(N) INDICATES NET ACREAGE  
(M) INDICATES CAD MEASURED  
(UE) UTILITY EASEMENT

PEDESTRIAN ACCESS ESMT 20' BOTH SIDES OF RIVER DOC #285167  
ELEC ESMT, 10-290-09, DOC #275322  
ELEC ESMT, SEC 4, 5, 8, 22, DOC #276199  
AT&T ESMT, SEC 22, DOC #277489

REVIEWED, 08/09/23 NJW  
UPDATE ROADS 05/18/22/NJW  
REMEASURE ACREAGE 10-290-02, 06/21/21/NJW  
ADD NEW PAGE 10-62, MOVE PARCELS 10-290-05, 07, 08, 09/03/19 NJW

