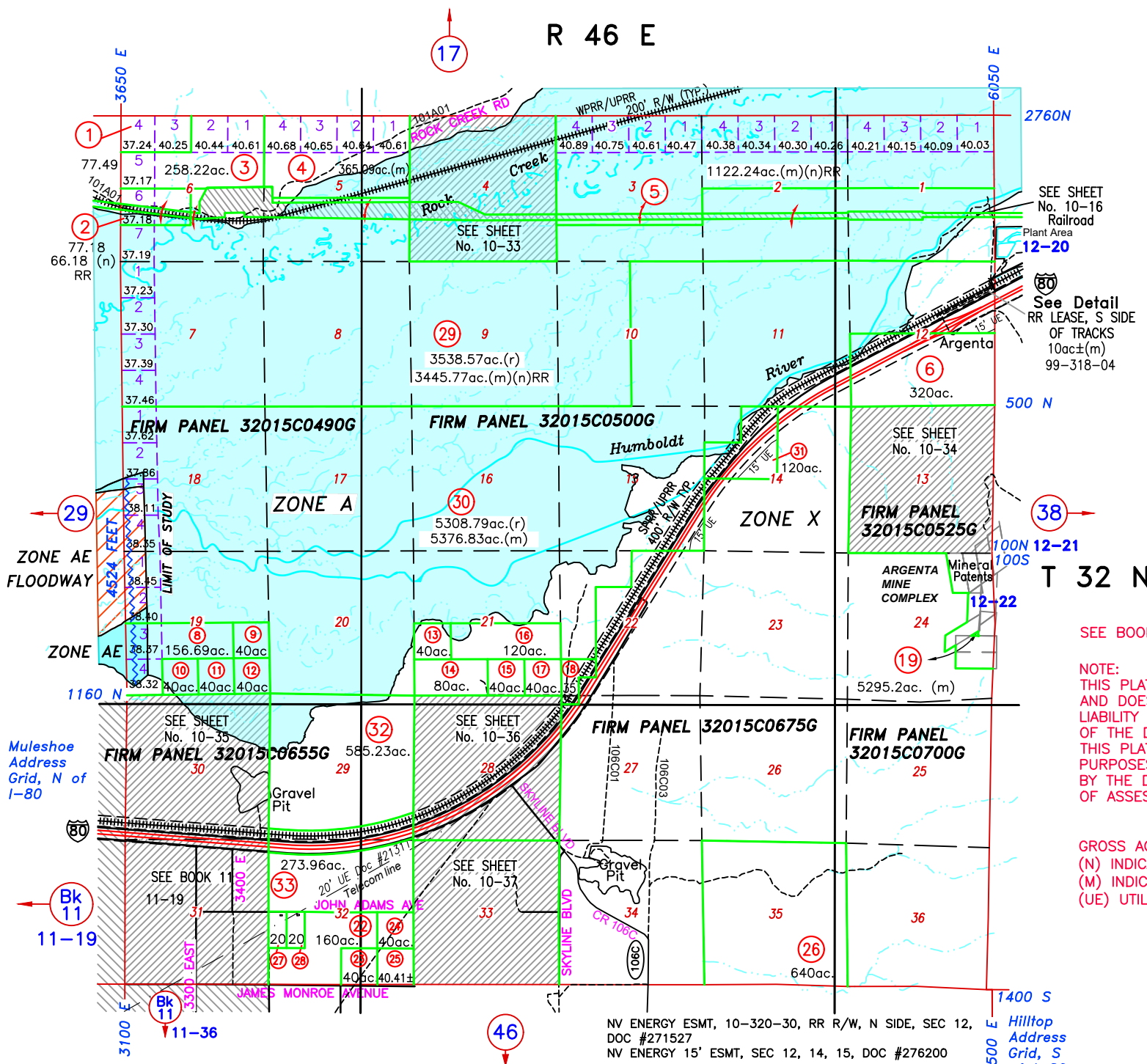


10-32 FLOOD ZONE MAP

R 46 E

17



	ZONE AE FLOODWAY		ZONE AE
REGULATORY FLOODWAY, STREAM CHANNEL AND FLOODPLAIN TO BE KEPT FREE OF ENCROACHMENT		BASE FLOOD ELEVATIONS DETERMINED 1% ANNUAL CHANCE OF FLOOD HAZARD, 100 YEAR FLOOD	
	ZONE A		ZONE X 500
BASE FLOOD ELEVATIONS UNDETERMINED 1% ANNUAL CHANCE OF FLOOD HAZARD, 100 YEAR FLOOD		0.2% ANNUAL CHANCE OF FLOOD HAZARD, 500 YEAR FLOOD	
			ZONE X
		AREAS OUTSIDE THE 500 YEAR FLOOD	
		4524 FEET 	
		BASE FLOOD ELEVATION	

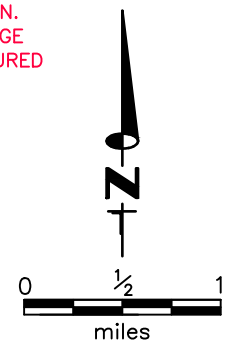
FLOOD ZONE DATA SOURCE: FEMA NATIONAL FLOOD HAZARD MAP <https://msc.fema.gov>

FLOOD INSURANCE RATE MAP PANELS - SEE MAP DATE: 11/20/2013

SEE BOOK 12 FOR PATENTED MINING CLAIMS

NOTE: THIS PLAT IS FOR ASSESSMENT USE ONLY, AND DOES NOT REPRESENT A SURVEY. NO LIABILITY IS ASSUMED AS TO THE ACCURACY OF THE DATA DELINEATED HEREON. USE OF THIS PLAT FOR OTHER THAN ASSESSMENT PURPOSES IS FORBIDDEN UNLESS APPROVED BY THE DEPARTMENT OF TAXATION, DIVISION OF ASSESSMENT STANDARDS.

GROSS ACREAGE IS SHOWN. (N) INDICATES NET ACREAGE (M) INDICATES CAD MEASURED (UE) UTILITY EASEMENT



M.D.B. & M.
LANDER COUNTY

UPDATE RR LEASE INFO, LOCATION APPROX, 06/05/23 NJW
UPDATE ACREAGE, 010-320-33, DOC #304819, 06/28/22 NJW
ROADS UPDATED, 05/18/22 NJW
CORRECTED ACREAGE 10-320-29, 03/30/22 NJW

NV ENERGY ESMT, 10-320-30, RR R/W, N SIDE, SEC 12, DOC #271527
NV ENERGY 15' ESMT, SEC 12, 14, 15, DOC #276200
SPRINT, ET AL, ESMT, ALONG RR, LARGE AREA, 10-320-02, 04, 05, DOC #269204

Hilltop Address Grid, S of I-80

Muleshoe Address Grid, N of I-80

Bk 11 11-19

Bk 11 11-36

46

38

T 32 N

500 N

2760N

1400 S

100N 12-21 100S

12-22

12-20

6050 E

3650 E

3100 E

1

11-36

2

11-19

3

11-19

4

11-19

5

11-19

6

11-19

7

11-19

8

11-19

9

11-19

10

11-19

11

11-19

12

11-19

13

11-19

14

11-19

15

11-19

16

11-19

17

11-19

18

11-19

19

11-19

20

11-19

21

11-19

22

11-19

23

11-19

24

11-19

25

11-19

26

11-19

27

11-19

28

11-19

29

11-19

37.24 40.25 40.44 40.61 40.68 40.65 40.64 40.61

40.89 40.75 40.61 40.47 40.38 40.34 40.30 40.26

40.21 40.15 40.09 40.03

77.49 5 258.22ac. 3 4 365.09ac.(m)

1122.24ac.(m)(n)RR

SEE SHEET No. 10-16 Railroad

37.17 6 37.18 7 37.19 8 37.23 9 37.30 10 37.39 11 37.46 12

SEE SHEET No. 10-33

Plant Area 12-20

66.18 (n) RR

3538.57ac.(r) 3445.77ac.(m)(n)RR

SEE SHEET No. 10-34

37.23 13 37.30 14 37.39 15 37.46 16

5308.79ac.(r) 5376.83ac.(m)

SEE SHEET No. 10-34

37.62 17 37.86 18 38.11 19 38.35 20 38.45 21 38.40 22 38.37 23 38.32 24

40ac. 120ac. 80ac. 40ac. 40ac. 40ac. 40ac.

120ac. 120ac. 120ac. 120ac. 120ac. 120ac. 120ac.

1160 N

5295.2ac. (m)

SEE SHEET No. 10-34

38.40 25 38.37 26 38.32 27

585.23ac. 29

SEE SHEET No. 10-36

38.40 28 38.37 29 38.32 30

273.96ac. Doc #21311 Telecom line

SEE SHEET No. 10-37

38.40 31 38.37 32 38.32 33

2020 160ac. 40ac. 40ac. 40.41±

SEE SHEET No. 10-37

1160 N

Gravel Pit

SEE SHEET No. 10-37

38.40 34 38.37 35 38.32 36

Gravel Pit

SEE SHEET No. 10-37

38.40 37 38.37 38 38.32 39

Gravel Pit

SEE SHEET No. 10-37

38.40 40 38.37 41 38.32 42

Gravel Pit

SEE SHEET No. 10-37

38.40 43 38.37 44 38.32 45

Gravel Pit

SEE SHEET No. 10-37

38.40 46 38.37 47 38.32 48

Gravel Pit

SEE SHEET No. 10-37

38.40 49 38.37 50 38.32 51

Gravel Pit

SEE SHEET No. 10-37

38.40 52 38.37 53 38.32 54

Gravel Pit

SEE SHEET No. 10-37

38.40 55 38.37 56 38.32 57

Gravel Pit

SEE SHEET No. 10-37

38.40 58 38.37 59 38.32 60

Gravel Pit

SEE SHEET No. 10-37

38.40 61 38.37 62 38.32 63

Gravel Pit

SEE SHEET No. 10-37

38.40 64 38.37 65 38.32 66

Gravel Pit

SEE SHEET No. 10-37

38.40 67 38.37 68 38.32 69

Gravel Pit

SEE SHEET No. 10-37

38.40 70 38.37 71 38.32 72

Gravel Pit

SEE SHEET No. 10-37

38.40 73 38.37 74 38.32 75

Gravel Pit

SEE SHEET No. 10-37

38.40 76 38.37 77 38.32 78

Gravel Pit

SEE SHEET No. 10-37

38.40 79 38.37 80 38.32 81

Gravel Pit

SEE SHEET No. 10-37

38.40 82 38.37 83 38.32 84

Gravel Pit

SEE SHEET No. 10-37

38.40 85 38.37 86 38.32 87

Gravel Pit

SEE SHEET No. 10-37

38.40 88 38.37 89 38.32 90

Gravel Pit

SEE SHEET No. 10-37