

R 44 E
N 1/2 Section 24

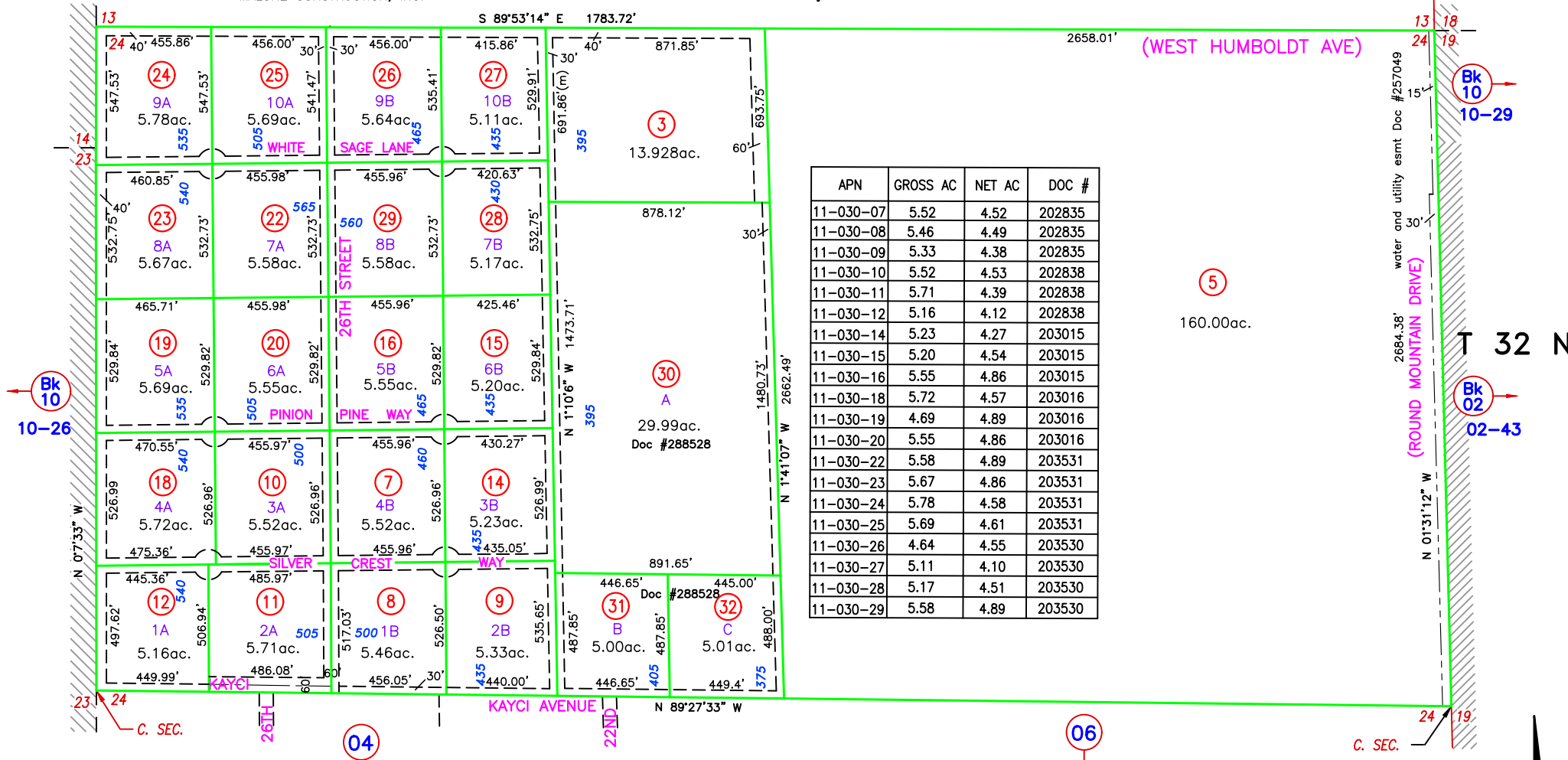
R 45 E

MALONE CONSTRUCTION, INC.

S 89°53'14" E 1783.72'

2658.01' (WEST HUMBOLDT AVE)

13 18
24 19



APN	GROSS AC	NET AC	DOC #
11-030-07	5.52	4.52	202835
11-030-08	5.46	4.49	202835
11-030-09	5.33	4.38	202835
11-030-10	5.52	4.53	202838
11-030-11	5.71	4.39	202838
11-030-12	5.16	4.12	202838
11-030-14	5.23	4.27	203015
11-030-15	5.20	4.54	203015
11-030-16	5.55	4.86	203015
11-030-18	5.72	4.57	203016
11-030-19	4.69	4.89	203016
11-030-20	5.55	4.86	203016
11-030-22	5.58	4.89	203531
11-030-23	5.67	4.86	203531
11-030-24	5.78	4.58	203531
11-030-25	5.69	4.61	203531
11-030-26	4.64	4.55	203530
11-030-27	5.11	4.10	203530
11-030-28	5.17	4.51	203530
11-030-29	5.58	4.89	203530

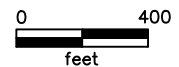
5
160.00ac.

water and utility esmt Doc #257049
2684.38' (ROUND MOUNTAIN DRIVE)

T 32 N

GROSS ACREAGE IS SHOWN.
(N) INDICATES NET ACREAGE
(M) INDICATES CAD MEASURED
(UE) UTILITY EASEMENT

NOTE:
THIS PLAT IS FOR ASSESSMENT USE ONLY, AND DOES NOT REPRESENT A SURVEY. NO LIABILITY IS ASSUMED AS TO THE ACCURACY OF THE DATA DELINEATED HEREON. USE OF THIS PLAT FOR OTHER THAN ASSESSMENT PURPOSES IS FORBIDDEN UNLESS APPROVED BY THE DEPT. OF TAXATION. DIVISION OF ASSESSMENT STANDARDS.



M.D.B. & M.

LANDER COUNTY