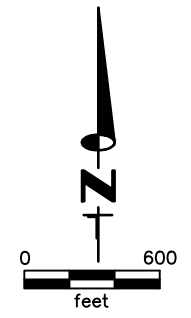


10-51 →

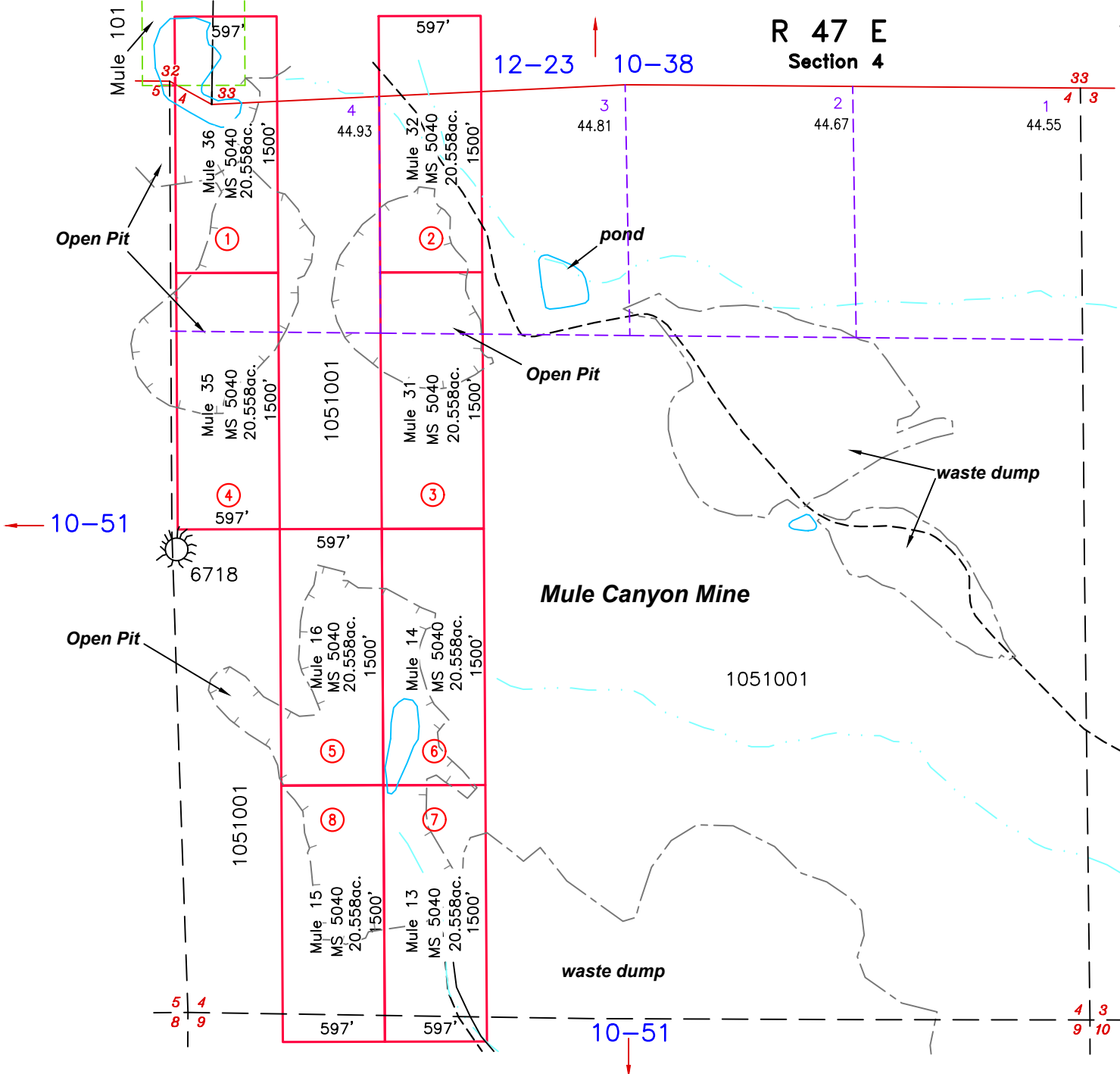
T 31 N

ACREAGE NOTE:
GROSS ACREAGES WERE OBTAINED FROM THE
MINERAL SURVEY INFORMATION, WHERE
PRESENT. FOR CLAIMS THAT OVERLAP, NET
ACREAGE WAS DETERMINED BY CAD
MEASUREMENTS. CLAIMS WERE CONSIDERED IN
CHRONOLOGICAL ORDER OF LOCATION.

NOTE:
THIS PLAT IS FOR ASSESSMENT USE ONLY,
AND DOES NOT REPRESENT A SURVEY. NO
LIABILITY IS ASSUMED AS TO THE ACCURACY
OF THE DATA DELINEATED HEREON. USE OF
THIS PLAT FOR OTHER THAN ASSESSMENT
PURPOSES IS FORBIDDEN UNLESS APPROVED
BY THE DEPARTMENT OF TAXATION, DIVISION
OF ASSESSMENT STANDARDS.



M.D.B. & M.



12-23 10-38

33
1 4 3

44.93 44.81 44.67 44.55

1051001

Mule 31
MS 5040
20.558ac.
1500'

Mule Canyon Mine

1051001

Mule 16
MS 5040
20.558ac.
1500'

Mule 14
MS 5040
20.558ac.
1500'

1051001

Mule 15
MS 5040
20.558ac.
1500'

Mule 13
MS 5040
20.558ac.
1500'

waste dump

10-51

4 3
9 10

Mule 101

32 33
5 4

Mule 36
MS 5040
20.558ac.
1500'

Mule 32
MS 5040
20.558ac.
1500'

Mule 35
MS 5040
20.558ac.
1500'

6718

Mule 16
MS 5040
20.558ac.
1500'

Mule 14
MS 5040
20.558ac.
1500'

1051001

Mule 15
MS 5040
20.558ac.
1500'

Mule 13
MS 5040
20.558ac.
1500'

waste dump

10-51

4 3
9 10

Open Pit

Open Pit

Open Pit

pond

waste dump

waste dump

← 10-51