

7-24 ↑

R 46 E Section 14

10 | 11
15 | 14

11 | 12
14 | 13

7-24 →
12-34 →
T 29 N

← 7-24

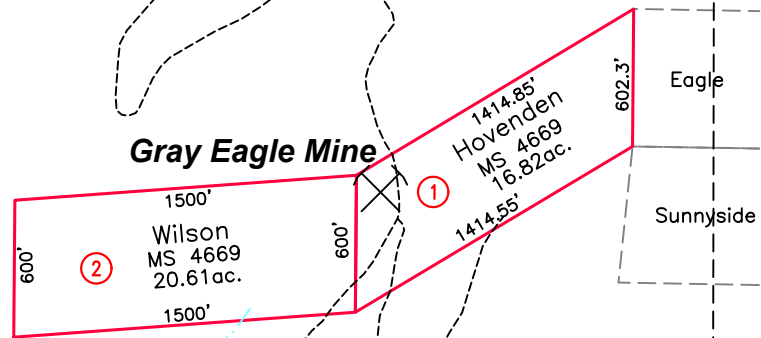
ACREAGE NOTE:
GROSS ACREAGES WERE OBTAINED FROM THE
MINERAL SURVEY INFORMATION, WHERE
PRESENT. FOR CLAIMS THAT OVERLAP, NET
ACREAGE WAS DETERMINED BY CAD
MEASUREMENTS. CLAIMS WERE CONSIDERED IN
CHRONOLOGICAL ORDER OF LOCATION.

NOTE:
THIS PLAT IS FOR ASSESSMENT USE ONLY,
AND DOES NOT REPRESENT A SURVEY. NO
LIABILITY IS ASSUMED AS TO THE ACCURACY
OF THE DATA DELINEATED HEREON. USE OF
THIS PLAT FOR OTHER THAN ASSESSMENT
PURPOSES IS FORBIDDEN UNLESS APPROVED
BY THE DEPARTMENT OF TAXATION, DIVISION
OF ASSESSMENT STANDARDS.

724022



O'Haras Peak



Gray Eagle Mine

Wilson
MS 4669
20.61 ac.

Hovenden
MS 4669
16.82 ac.

Eagle

Sunnyside

15 | 14
22 | 23

14 | 13
23 | 24

7-24 ↓ 12-35

