

MINERAL PATENTS  
BULLION-CAMPBELL  
MINING DISTRICT

7-34 R 46 E Section 23

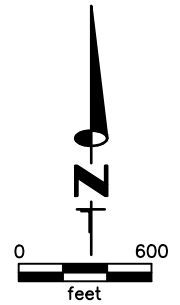
15 14  
22 23

14 13  
23 24

7-34 →  
T 28 N

ACREAGE NOTE:  
GROSS ACREAGES WERE OBTAINED FROM THE  
MINERAL SURVEY INFORMATION, WHERE  
PRESENT. FOR CLAIMS THAT OVERLAP, NET  
ACREAGE WAS DETERMINED BY CAD  
MEASUREMENTS. CLAIMS WERE CONSIDERED IN  
CHRONOLOGICAL ORDER OF LOCATION.

NOTE:  
THIS PLAT IS FOR ASSESSMENT USE ONLY,  
AND DOES NOT REPRESENT A SURVEY. NO  
LIABILITY IS ASSUMED AS TO THE ACCURACY  
OF THE DATA DELINEATED HEREON. USE OF  
THIS PLAT FOR OTHER THAN ASSESSMENT  
PURPOSES IS FORBIDDEN UNLESS APPROVED  
BY THE DEPARTMENT OF TAXATION, DIVISION  
OF ASSESSMENT STANDARDS.

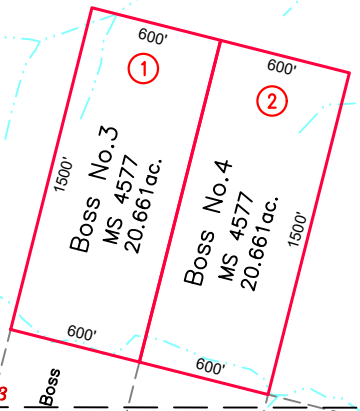


M.D.B. & M.

LANDER COUNTY

← 7-34

734024



22 23  
27 26

23 24  
26 25

7-34  
12-50