

MINERAL PATENTS
REESE RIVER
MINING DISTRICT

Section 17

R 44 E

5-45

7 8
18 17

8 9
17 16

HUMBOLDT-

TOIYABE

5-45 NATIONAL

545001

FOREST

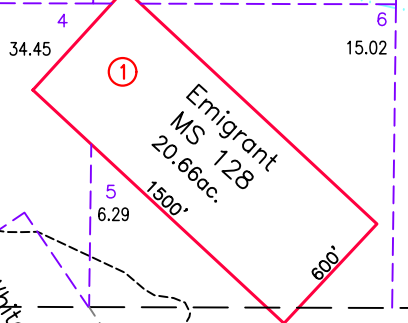
5-45 →

T 19 N

ACREAGE NOTE:
GROSS ACREAGES WERE OBTAINED FROM THE
MINERAL SURVEY INFORMATION, WHERE
PRESENT. FOR CLAIMS THAT OVERLAP, NET
ACREAGE WAS DETERMINED BY CAD
MEASUREMENTS. CLAIMS WERE CONSIDERED IN
CHRONOLOGICAL ORDER OF LOCATION.

NOTE:
THIS PLAT IS FOR ASSESSMENT USE ONLY,
AND DOES NOT REPRESENT A SURVEY. NO
LIABILITY IS ASSUMED AS TO THE ACCURACY
OF THE DATA DELINEATED HEREON. USE OF
THIS PLAT FOR OTHER THAN ASSESSMENT
PURPOSES IS FORBIDDEN UNLESS APPROVED
BY THE DEPARTMENT OF TAXATION, DIVISION
OF ASSESSMENT STANDARDS.

← 5-55
13-10



①

Emigrant
MS 128
20.66ac.
1500'
600'

3
39.89
4
34.45
5
6.29
6
15.02

43221

White

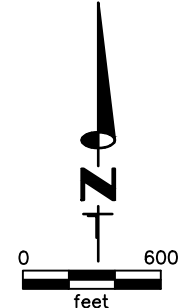
← 13-13

18 17
19 20

17 16
20 21

5-58 13-14 5-45

REVIEWED, 10/20/22 NJW
UPDATE ROADS, 07/06/20 NJW
NEW MAP 11/15/18 NJW



M.D.B. & M.