

MINERAL PATENTS REESE RIVER MINING DISTRICT

R 44 E

Section 20

SELECT PARCEL DATA

APN	CLAIM	AREA
13-140-11	Manhattan MS 81	0.002 ac
13-140-12	Troy MS 90	0.255 ac
13-140-13	Blue MS 57	0.227 ac
13-140-14	Savage MS 98	3.745 ac
13-140-15	Blue MS 72	0.284 ac
13-140-16	Oregon MS 67	2.37 ac
13-140-17	Osceola MS 73	0.82 ac

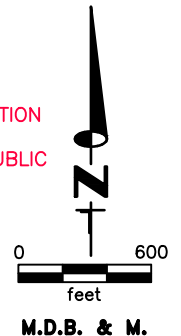
ACREAGE NOTE:
GROSS ACREAGES WERE OBTAINED FROM THE MINERAL SURVEY INFORMATION, WHERE PRESENT. FOR CLAIMS THAT OVERLAP, NET ACREAGE WAS DETERMINED BY CAD MEASUREMENTS. CLAIMS WERE CONSIDERED IN CHRONOLOGICAL ORDER OF LOCATION. CLAIMS THAT OVERLAP THE AUSTIN TOWN BOUNDARY HAVE BEEN DIVIDED INTO PARTS, BOOK 13 OUTSIDE TOWN, BOOK 01 INSIDE TOWN

5-45 →

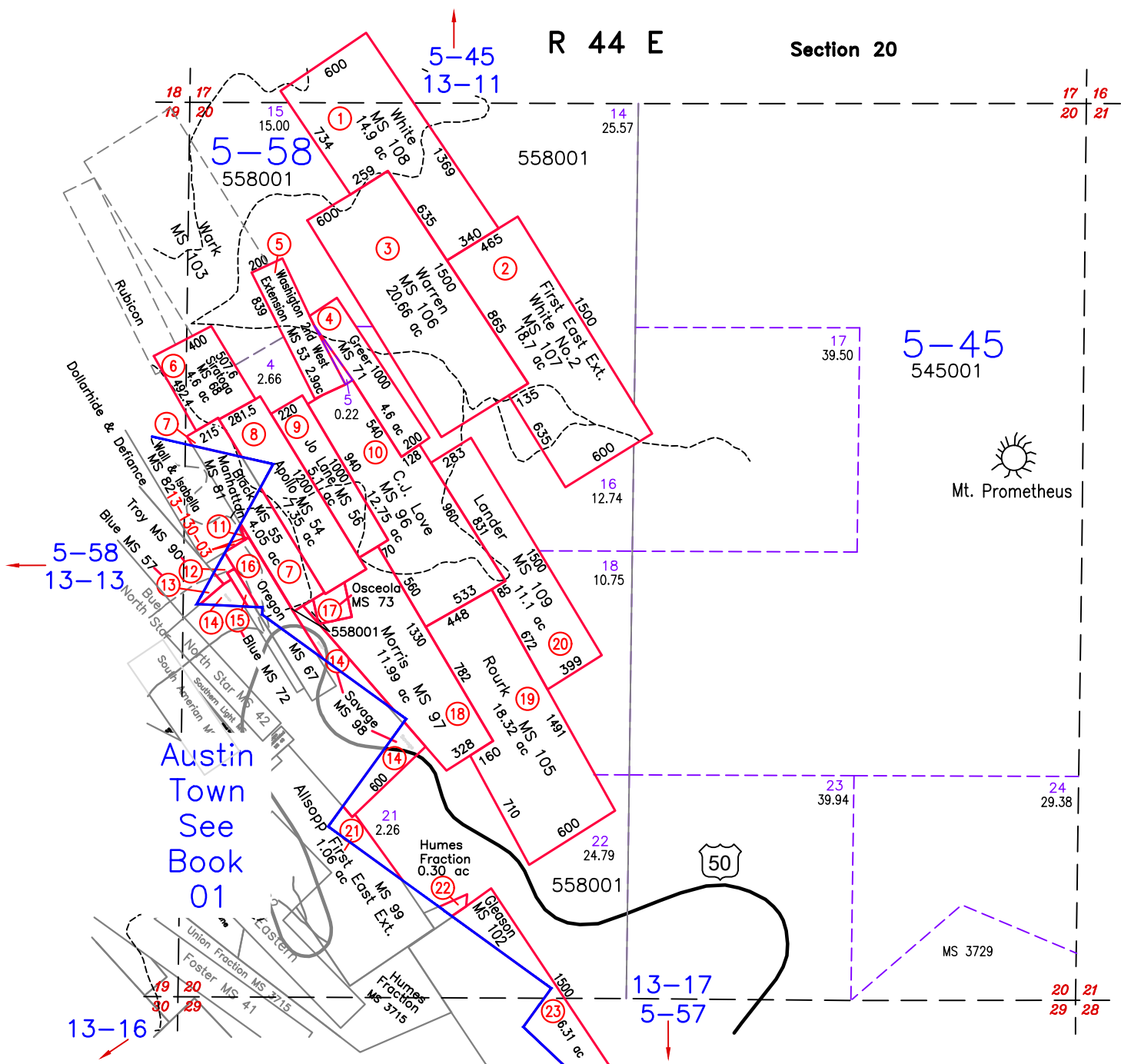
T 19 N

NOTE:
THIS PLAT IS FOR ASSESSMENT USE ONLY, AND DOES NOT REPRESENT A SURVEY. NO LIABILITY IS ASSUMED AS TO THE ACCURACY OF THE DATA DELINEATED HEREON. USE OF THIS PLAT FOR OTHER THAN ASSESSMENT PURPOSES IS FORBIDDEN UNLESS APPROVED BY THE DEPARTMENT OF TAXATION, DIVISION OF ASSESSMENT STANDARDS.

CLAIM REFERENCE:
CLAIM BOUNDARIES WERE DETERMINED BY A COMBINATION OF THE ORIGINAL MINERAL SURVEYS, AND THE BLM PUBLIC LANDBASE.



LANDER COUNTY



ADJUST ACREAGE AROUND TOWN LIMITS, 10/18/22 NJW
NEW MAP 11/15/18 NJW